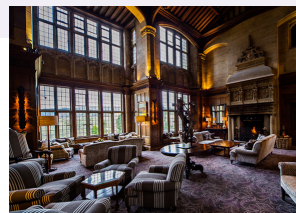


NATIONAL TRUST DAY OUT



Bovey Castle

www.visitdartmoor.co.uk/bovey-castle

North Bovey, Moretonhampstead, Devon, TQ13 8RE

The five red star Bovey Castle is history, excitement, glamour and adventure. Where else can you wear your Hunter Wellies at 8am, Golf Spikes at 3pm and Manolo Blahniks for dinner. But while we offer our guests luxury and indulgence, this is not a stuffy hotel where you can't sit on the furniture or let your kids enjoy themselves. Immerse yourself in the luxuriously appointed décor, and outstanding service, challenge yourself on our championship golf course, relax in the holistic spa, experience the vast array of activities available and indulge your taste buds with the superb food and outstanding wine list. Bovey Castle is a place where you can live out your dreams, then put your feet up.



Finch Foundry

www.visitdartmoor.co.uk/finch-foundry

Sticklepath, Okehampton, Devon, EX20 2NW

Car Park not suitable for coaches.

Set amidst beautiful Dartmoor countryside in the village of Sticklepath, this last remaining water-powered forge in England, gives a unique insight into village life in the 19th-century. In its heyday the foundry made 400 tools a day including sickles, scythes and shovels for West Country farmers and miners. Demonstrations of the machinery every hour.

Our tearoom overlooks the River Taw and steeply wooded moorland. Enjoy a cream tea in our beautiful garden or have a look in our shop for a special keepsake to take home.



Lydford Gorge

www.visitdartmoor.co.uk/lydford-gorge

The Stables, Lydford Gorge, Lydford, Devon, EX20 4BH

Parking and Tea Room.

The combination of geology, water and climate change has created the deepest river gorge in the south west providing a truly breathtaking experience which has been enjoyed since Victorian times.

The steep sided wooded gorge hidden on the western fringe of Dartmoor inspires many myths and legends and no wonder with features such as the 30-metre Whitelady waterfall and the turbulent pot hole called the Devil's Cauldron.

You can explore the gorge with a choice of adventurous walks from one to three miles. Throughout the seasons there is an abundance of wildlife and plants to see, from woodland birds to wild garlic in the spring and fungi in the autumn.

There are car parks and tea-rooms at either end of gorge. The shop sells a range of outdoor clothing including walking boots, as well as books, art and delicious local food.

www.visitdartmoor.co.uk
Places to stay, places to visit and things to do on Dartmoor

HISTORY & HERITAGE Tavistock-Yelverton-Princetown



Accommodation - Northgate House

www.visitdartmoor.co.uk/northgate

Northwood Lane, Buckfast, Buckfastleigh, Devon, TQ11 0EG

Northgate House Hotel at Buckfast Abbey provides an ideal base for business and leisure travellers. Situated mid-way between Plymouth and Exeter just off the A 38 Devon Expressway, the hotel benefits from a central, yet peaceful, location on the edge of Dartmoor.

Perfect for visitors to the Abbey Church and those enjoying a hiking or canoeing break, it has 33 luxurious, contemporary-styled bedrooms.

The hotel has a bar and a restaurant with a new menu showcasing local produce, plus a terrace, affording stunning views over the gardens and the surrounding countryside.

For those looking for a more flexible stay, Buckfast Abbey also has a range of self-catering accommodation, suitable for families and groups.



Morning Activity & Lunch - Buckfast Abbey

www.visitdartmoor.co.uk/buckfast-abbey

Buckfast, Buckfastleigh, Devon, TQ11 0EE

This jewel in Devon's crown boasts a fascinating history: Founded by King Canute in 1018, Buckfast Abbey was at the heart of the community until Catholic monasteries were dissolved by King Henry VIII.

The site gradually fell into ruins, but several hundred years later, it was brought back to life by a group of exiled French monks. Between 1906 and 1937, they lovingly re-built the Abbey Church on the medieval foundations and re-established the monastery.

Don't miss the Sensory, Physic and award-winning Millennium Gardens. A highlight during the summer months is The Lavender Garden, boasting 50 varieties of this soothing and colourful plant.

The Abbey Church, with its dramatic Lantern Ceiling, art treasures and stunning Blessed Sacrament Chapel depicting a modern interpretation of Christ in stained glass, is a haven of peace.



Afternoon Activity - South Devon Railway

www.visitdartmoor.co.uk/south-devon-railway

The Station, Dartbridge Road, Buckfastleigh, Devon, TQ11 0DZ

The longest established steam railway in the south west, the line is a former Great Western Railway branch line which in 2019 celebrated the 50th anniversary of its opening as a preserved railway.

The South Devon Railway runs along the stunning valley of the River Dart between Buckfastleigh and Totnes Riverside, stopping halfway at Staverton and passing through glorious scenery, rich in wildlife.

As well as the steam train ride, there is loads to see and do at Buckfastleigh, with beautiful gardens, a riverside picnic area, museum, workshop and refreshment rooms, plus a great gift shop with a superb selection of souvenirs and model railway items. On certain days, the miniature railway and garden railway at Buckfastleigh are also running.

Buckfastleigh station, which is just off the A38, midway between Exeter and Plymouth, has plenty of free car parking. The SDR station at Totnes Riverside is a short walk from Totnes town and the main line station is some 500 yards away on foot.

www.visitdartmoor.co.uk
Places to stay, places to visit and things to do on Dartmoor



Dartmoor for Group Travel!

Situated in the south west of England, right in the very heart of Devon, Dartmoor is an ancient landscape of stunning views, awe inspiring granite tors, deep wooded valleys with fast flowing rivers, and rugged, wide open spaces.

Steeped in history, with a huge number of archaeological places of interest such as ancient stone rows and bronze age settlements, Dartmoor also offers visitors the opportunity to enjoy absolute peace and quiet, time to sit watching our herds of beautiful wild ponies with their enchanting foals where they have roamed free for 4000 years.

We have developed a series of itineraries, something for everyone!

Our hotels are second to none, nothing is too much trouble as on Dartmoor we care deeply about our visitors. Wonderful country hotels with superb, locally produced food prepared by world class chefs.



www.visitdartmoor.co.uk
Places to stay, places to visit and things to do on Dartmoor

ARTS & CRAFTS on DARTMOOR



The Edgemoor Country House Hotel & Restaurant

www.visitdartmoor.co.uk/edgemoor

Haytor Road, Bovey Tracey, Devon, TQ13 9LE

The Edgemoor Hotel a family-owned, dog friendly country house hotel located on the boundary of the Dartmoor National Park, South Devon. Built in the 1870s, and once Bovey Tracey Grammar School.

The hotel has since undergone substantial tasteful renovation and now features a mixture of both traditional and contemporary style interiors. Each one of our 17 rooms are full of heart-warming character, with space to unwind and enjoy quiet comforts like luxurious bedding, en-suite, and a place to curl up with a book.

Enjoy the delights of a Devon cream tea the Old School Tea Rooms or dine in cozy ambiance either in the dining room or bar.



MORNING VISIT & Lunch The Devon Guild of Craftsmen & Restaurant

www.visitdartmoor.co.uk/devon-guild

Riverside Mill, Fore Street, Bovey Tracey, Devon, TQ13 9AF

Riverside Mill houses the largest contemporary crafts venue in the South West, with galleries, craft shop and popular café with terrace views. Entry is free. The shop displays a wide variety of hand-made crafts including ceramics, jewellery, textiles, furniture, prints and woodwork by its 240 local Guild Members. The exhibition galleries hold a regularly changing programme featuring exciting work by contemporary designer-makers from all over the UK. As an educational charity, the Guild runs a wide outreach programme teaching crafts in schools, through residencies and workshops. It also offers professional development, mentoring and networking for makers.

Adjacent public parking. Flat entranceway, one dedicated parking space for disabled badge owners, with lift to first floor café and wide aisles throughout.



AFTERNOON VISIT & TEA House of Marbles & Restaurant

visitdartmoor.co.uk/house-of-marbles

Pottery Road, Bovey Tracey, Newton Abbot, Devon, TQ13 9DS

With a nod to the past and an eye on the future.

At House of Marbles and Teign Valley Glass we have been manufacturing our unusual range of games, toys, marbles and glassware since 1973. Visitors to our beautiful Devon site can enjoy museums of glass, games, marbles and pottery. Watch exciting glassblowing, see marvelous marble runs and browse our beautiful shops. Have fun in the games garden and indulge in a hot drink and cake, breakfast, lunch or afternoon tea in our fully licensed restaurant. With lots of free parking and free entry, a visit to us is perfect whatever the weather and for all ages.

CASTLE & GALLERY



Mill End Country Hotel

visitdartmoor.co.uk/mill-end-hotel

Sandy Park, Chagford, Newton Abbot, Devon, TQ13 8JN

A Dartmoor hotel on the banks of Devon's majestic River Teign, Mill End Hotel and Restaurant is your perfect Country House hideaway. Escape to Dartmoor. Immerse yourself in the wild glory of Devon's own Dartmoor National Park, whilst soaking up the hospitality, comfort and warmth on which we pride ourselves here at Mill End.

Dartmoor is all around. Walking, cycling, fishing and all manner of outdoor pursuits are yours to enjoy. Or just find a perfect spot to sit and soak up the Dartmoor view. Just five minutes from the A30, and 25 minutes from Exeter, we're easy to get to but a million miles away. Devon's coasts are a short drive away. And we're dog-friendly too.



Castle Drogo

www.visitdartmoor.co.uk/castle-drogo

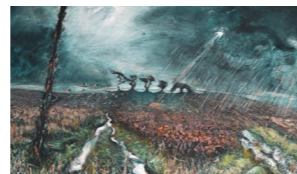
Drewsteignton, Devon, EX6 6PB

Castle Drogo is situated high above the Teign Gorge. It was designed by Sir Edwin Lutyens for self-made millionaire Julius Drewe. It looks ancient, but this remarkable building was only constructed 100 years ago, the last castle ever built in England. From the beginning it has suffered from water penetration and is now undergoing a 6-year conservation project that will last until 2018 to make it watertight.

Inside you can explore the castle's refreshed layout, with rooms redisplayed with installations and precious treasures displayed in new ways.

Outside stroll around the formal gardens or explore the Teign Valley with its ancient gorge, teeming with wildlife.

Or recharge at the café with a traditional Devon cream tea or tuck into a slice of cake.



Green Hill Arts

www.visitdartmoor.co.uk/green-hill-arts

Fore Street, Moretonhampstead, Newton Abbot, Devon, TQ13 8LL

Green Hill is Dartmoor's leading dedicated Art Gallery and Shop. Based in Moretonhampstead and one of Devon's most prominent Art Galleries, Green Hill is attracting the attention of some of the most respected South West Artists. Names such as Peter Randall-Page, Susan Derges, and Peter Stiles have become synonymous with Green Hill over the last four years, having exhibited in the Gallery's large attractive contemporary space, and supported the Gallery's developing programme.

The Art Shop offers space for artists to exhibit and sell their work from paintings, prints and ceramics through to textiles, wood and ironwork. Within this imaginatively converted former Primary School there are studio and creative workspaces for hire, mixed use offices, a Youth Centre and Heritage Archive.

ACTIVE DARTMOOR MINI-BREAK



Moorland Hotel

visitdartmoor.co.uk/moorland-hotel

Wotter, Plymouth, Devon, PL7 5HP

The Moorland Hotel is situated in an unrivalled location on the southern slopes of Dartmoor National Park, commanding uninterrupted views across the moors and to the sea beyond. It is the ideal centre for touring this beautiful and very interesting part of South Devon, including the beaches of the South Hams, the fascinating areas of Dartmoor with its quaint villages and of course the ponies, or the coastal city of Plymouth with all its maritime history.

There is also a wealth of National Trust Properties in close proximity. We are well located for our corporate guests too; far enough away from the hustle and bustle, but only 20 minutes from the centre of Plymouth.



Devon Cycling Holidays

visitdartmoor.co.uk/devon-cycling-holidays

Bittern Road, Sowton Industrial Estate, Exeter, Devon, EX2 7LW

Bespoke cycle tours arranged for Dartmoor & Devon. Pick up from Hotel.

Discover Devon and all that the county has to offer by including cycling in your holiday. Take in the coastal views of the Exe Estuary trail, a trip on Devon's Coast to Coast ride or discover dynamic Dartmoor with us. We have a selection of fantastic multi day tours, short breaks, weekend tours and self-led rides through out Devon with one thing in common. Our breaks all include the friendly advice and support of local cycling experts that want you to love Devon as much as they do.



Plym's Old Lines - Walk

www.visitdartmoor.co.uk/plyms

Plym Valley Railway, Plymouth, Devon

Distance: 5 miles easy walk. Start/End point: Plym Valley Railway (Grid Ref: SX522568).

This route is quite easy & suitable for all. Along the route there are woodland and riverside paths, and disused railway track. Short road section. One short ascent and descent. This route should take the average walker roughly 2 - 3 hours.

The lower Plym Valley, with its woodland walks and riverside paths, lies right on Plymouth's doorstep. Yet it is hidden from the city, and offers wonderful views of Dartmoor.

This walk includes the industrial remains of the Tavistock Railway and its viaducts, a tramway that used granite sleepers, and a quarry complete with engine house.

It also offers the chance to study peregrine falcons. Choose spring, when the peregrines nest and the woods burst into colour with anemones and bluebells.

Theme: City, Country, Heritage **Special Interest:** Birdwatching, Nature, Historical, Wildlife **Area:** Plymouth, South Devon - South Hams.

Relevant maps/guides: Explorer OL20, Landranger 201.

Facilities along route: There are many refreshment opportunities in Plympton and Plymouth, and also public toilets at the start.